

Support Home Sweet Home Ministries



ADVOCATE

Share our story with others.
Invite us to speak to your group, club, or friends.



PARTICIPATE

Volunteer your time and talents.
Serve a meal, sort donations, or teach a class.



DONATE

Invest your financial resources in the restoration of lives.
Become a Partner in Hope through monthly donations.



VISIT

Schedule a tour:
303 E. Oakland Ave.
Bloomington, IL 61701
(309) 828-7356



DISCOVER

hshministries.org
missionmart.org
hshrenew.org



CONNECT

@HomeSweetHome
Ministries



Building Community

2018 Annual Report



Dear Friends,

All of us at Home Sweet Home Ministries strive to live out Home Sweet Home Ministries' mission every day. Over the past year, we have given special attention to the many ways in which we build community. I invite you to peruse the sampling of some of the many community connections that we have developed during 2018.

Remember, this is only a sampling. Individuals, churches, groups, and organizations give of themselves every day to make sure that their neighbors receive the assistance they need to live life fully.

Other community connections tend to be "invisible." Home Sweet Home Ministries has friends who support us with their prayers and gifts throughout their lives and also remember us in their estate plans. We never know when those gifts will come our way or what impact they will have on our day to day operations. We were blessed to receive some significant estate gifts in 2018. Unless otherwise designated, all gifts from estates are carefully and prayerfully allotted to specific current and future needs of Home Sweet Home Ministries. We honor the lives of those who have made these gifts by ensuring that Home Sweet Home Ministries will continue to minister to this community for years to come.

In 2019 we will highlight the "innovative approaches" aspect of our mission statement. Keep your eye out for future communication about some new and creative ways of instilling hope, restoring lives, and building community.

Sincerely,

Mary Ann Pullin
Chief Executive Officer



Mission

Home Sweet Home Ministries demonstrates Christ's love through innovative approaches that instill hope, restore lives, and build community.

Vision

A ministry of refuge and renewal powered by Jesus Christ.



Board Members

Mitch Stebel, President
Robert Beerup, Secretary
Kevin Huetten
Wes Wright
Dean Messinger
Phil Sauder

Tammy Heard
Paul Stroup
Kathy Rous
Eric Hoss
Tony Gilmer
Jenny Hill Scott



Executive Team

Mary Ann Pullin,
Chief Executive Officer

Matt Burgess,
Chief Operating Officer



Community Connections



8 local churches along with Hy-Vee participated in Big Give.



Several churches and friends provided fresh garden produce.



Midwest Food Bank partnered with HSHM for Give Thanks. Provides weekly donations.



Illinois State University students volunteered in our kitchen and warehouse.



OSF St. Joseph Medical Center hosted 16th annual Shoe Drive.



Jury's Out continued their Mission for the Mission.



State Farm contributed computers, matching gifts, and volunteers.



Local landlords partnered with Rapid Rehousing program.

Community Connections



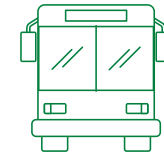
The City of Bloomington hosted a Chili Cook-off to benefit HSHM.



The City of Bloomington Township partnered with HSHM for the POTS program.



Fleet Feet Sports Bloomington hosted the 5th annual Run For Hope to benefit HSHM.



Connect Transit Employees provided a 4th of July picnic for HSHM residents.



Several community members participated in our May Match Challenge.



Businesses, churches, and other organizations hosted food drives.



Thousands of donors provided food, shelter, and hope to those we serve.



Hundreds of individuals and families volunteered in our Dining Center and Warehouse.



15,187
Nights of
Shelter

91 Children served

34 Veterans served



Accomplishments



Night In A Car 2018 raised
over \$47,000.



Initiated Rapid Rehousing Program.



Bridge of Hope Program
Expanded.



Significant building renovations to
shelter lounges, locker rooms, and
laundry facilities.



Maintained Food Farmacy in
partnership with Community Health
Care Clinic.



Food Services



92,443

meals served at HSHM.

1,031

meals delivered on Thanksgiving and Christmas.

2,522

households impacted through Give Thanks in partnership with Midwest Food Bank

228,751

pounds of food and other items donated to HSHM.



Bread For Life Food Co-op

301

Active Co-op members



1,848

Shopping trips



6,437

Hours of service completed by co-op members



5

Community gardens



Volunteers



33,865

Total volunteer
hours at HSHM

3,320

Total number of
volunteers



Our biggest day of service: *Thanksgiving*

Area most volunteers served in: *Dining Center*



Moments of Hope Past Residents' Quotes

"It's truly a
blessing from
God."

"This place is a life saver. I still
can't believe all this place does for
a person going through a bad
situation. They helped me with
all resources available."

"Very calming
during a
turbulent time in
my life and I
thank you."

"I love it here. It's
a safe place."

"Thanks to all the
HSHM team for helping
me through my
hardship. For giving me
shelter, food, resources
to find a job, and help
me save money. Thanks
to you I have a great
new start in life!"

"I think it's a fantastic facility and a
great service to the community."



HSHRenew



1,309,907

Pounds of materials recycled in total.

379,080

Pounds of clothing and shoes collected from HSHRenew bins.



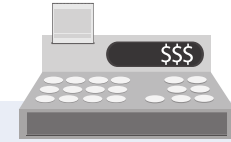
2,437



Pounds of shoes collected through OSF Shoe Drive.



Mission Mart



Mission Mart Gross Sales

\$521,559

Warehouse Revenue

\$229,643

Emergency clothing vouchers distributed

19

Best Selling Department: Women's Clothing

Best Day of Sales: Wednesday



Financials

Operational Funding Sources

Grants  \$259,538

In-Kind Gifts  \$245,946

Companies & Churches  \$99,012

Special Events  \$69,148

Miscellaneous  \$649,326

Individual
Donations
\$1,164,258

Retail Operations
\$751,202

HSHM Expenses


12%

Fundraising


18%

Management


70%

Programs

Goals 2019

**Increase
participation
and revenue for
Night In A Car.**

**Continue to grow
Bridge of Hope
program and
Rapid Rehousing
program.**

**Provide at least
2,000 shopping
trips in the
Bread For Life
Food Co-op.**

**Encourage
involvement of
shelter residents
with meal
planning and
preparation.**

**Enhance
workforce
development
services in Retail
Operations.**

Photos



Night In A Car



5th Annual Run For Hope



Our Redeemer Big Give



Thrivent Serves A Meal



Victory Big Give



Bread For Life Co-op



Rapid Rehousing



Give Thanks Distribution



Thanksgiving Day



Christmas Day



Point of Change
Christmas Decorating

Photos



Compass Insurance
Serves a Meal



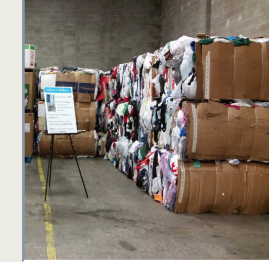
Community Purple
Day



Illinois Farm Bureau
Prairie Farms Milk Donation



ISU Volunteers



Warehouse Open House



Core 3 Serves a Meal



IWU Volunteers



State Farm Volunteers



Donations



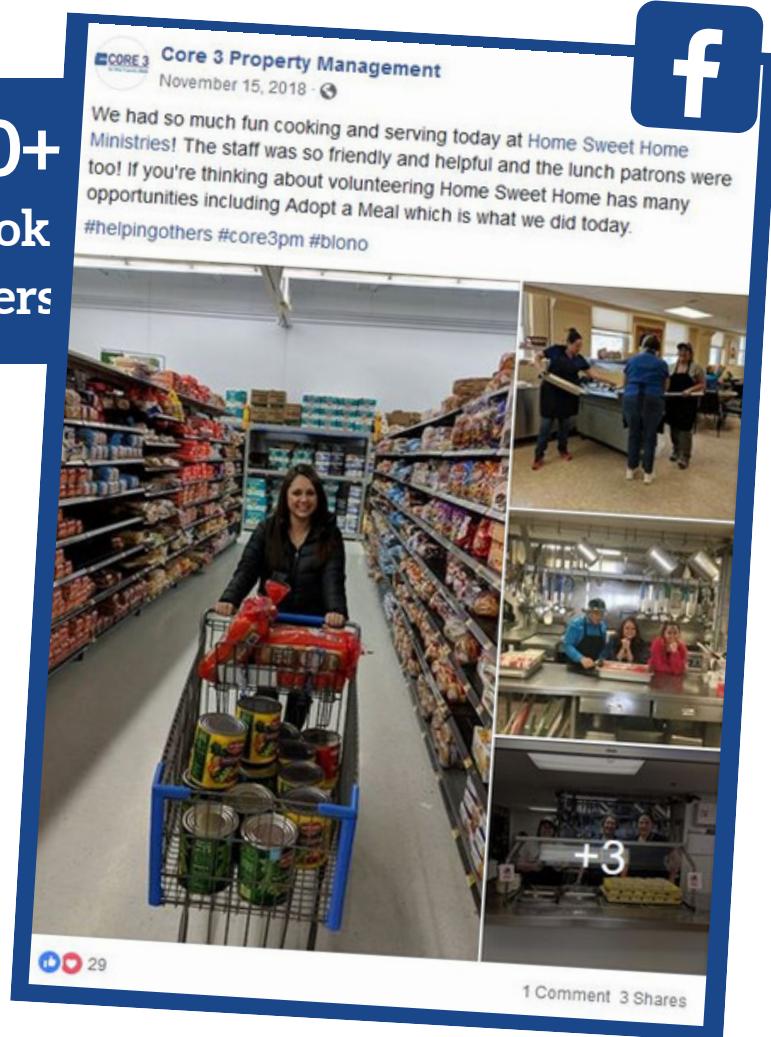
Jury's Out
Mission for the Mission



Connect Transit Picnic

Social Engagement

3,400+
Facebook
Followers



600+
Twitter Followers



240+
Instagram Followers



Thank You

Thank you for your
generous support and
prayers in 2018. Together
we have provided hope
and restored lives.
Together we will
continue to build a
stronger community.

