

2025 HS HM

ANNUAL REPORT



A LETTER FROM CEO, MATT BURGESS

Dear Friends,

As we reflect on 2025, we are grateful for the opportunity to continue serving our community and to continue our mission of **demonstrating Christ's love through innovative approaches that instill hope, restore lives, and build community**. This year has been marked by meaningful growth, expanded services, and measurable impact.

Throughout 2025, **Home Sweet Home Ministries** provided safe shelter to hundreds of individuals, ensuring that our neighbors in crisis had access to a warm bed, nutritious meals, and compassionate care. Our **emergency shelter services** remained a cornerstone of our work, operating at high capacity while maintaining a focus on dignity and respect for every resident.

A significant achievement this year was the expansion of our shelter programs through the development of **The Bridge**, the first non-congregate shelter village in Central Illinois. By changing both the capacity and configuration of shelter in our community, we are able to support more individuals in moving from homelessness to stable, independent living.

Our community outreach initiatives also grew in both scope and effectiveness. Our **Street Outreach** team connected with individuals who might not otherwise seek help, providing essential supplies, referrals, and connections to services. The Bread For Life Co-op offered our members increased food security within the context of supportive community. The Junction served as a welcoming space where our guests made first steps toward stability and social connection.

As always, **volunteer engagement** and **community partnerships** played a vital role in our success. Hundreds of volunteers contributed their time and talents, while local churches, organizations, businesses, and donors provided essential financial and in-kind support. Together, these collaborations have amplified our impact and reinforced a shared commitment to ending homelessness in our community.

As we look forward, we remain committed to **expanding our reach, deepening our impact, and walking alongside** each individual on their journey toward hope and independence. None of this would be possible without the unwavering support of our community.

Thank you for being part of this mission.

Sincerely,
Matt Burgess
Chief Executive Officer

Matt Burgess





Board of Directors

Matt Burgess, CEO

Sally Salegna, President

Meg Barnet, Vice President

John Kim, Secretary

Rena Etkin

Ann Gilmore

Ryan Huette

Dennis Mierzwa

Amanda Ray

Dr. Stacey Wiggins

Steve Zimmerman

Jaqueline Collins

Joseph Dehn

MISSION

To demonstrate Christ's love through innovative approaches that instill hope, restore lives, and build community.

VISION

To be a ministry of refuge and renewal powered by Jesus Christ.



A WORD

FROM CLIENT SERVICES

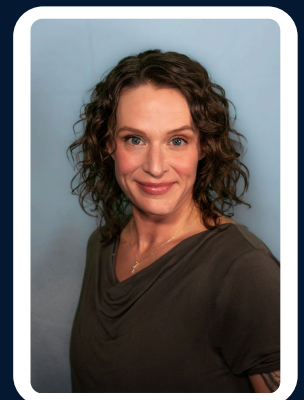
As we reflect on 2025, my heart is filled with gratitude and hope for all that has been accomplished through the work of Home Sweet Home Ministries. Across our programs, we have remained committed to meeting people where they are, offering compassionate care that restores dignity, strengthens connection, and helps create possibilities for a brighter future.

Last year was also marked by intentional planning and preparation for the Bridge, our low-barrier shelter village. We have been deeply encouraged by the overwhelming support surrounding this effort. Community partners, volunteers, and supporters have come alongside us with a shared vision and generous hearts, helping to lay a strong foundation for all that is unfolding in 2026 and beyond. This collective commitment reflects a growing desire to respond to homelessness with both compassion and innovation.

Each day, we are reminded that lasting change begins with hope. We see that hope take shape as individuals find safety, experience trust, and begin to rebuild their lives within a supportive community. It is a privilege to witness lives being restored and a genuine sense of belonging among those served. As it is written in Deuteronomy 15:10, "Give liberally and be ungrudging when you do so, for on this account the LORD your God will bless you in all your work and in all that you undertake." This principle is reflected in the generosity, care, and collaboration that make this work possible. The continued support of the community through prayers, financial contributions, and volunteer service strengthens our residential shelter, advances initiatives like the Bridge, and allows Home Sweet Home Ministries to provide care, dignity, and renewed hope for those most in need.

Together, we are nurturing a community where love, respect, and compassion guide every interaction, and where every person has the opportunity to heal, grow, and embrace a brighter future.

Sincerely,
Kody Swaney,
Client Services Director



2025 HOPEFUL HIGHLIGHTS

We have so much exciting info to share from last year!
Check out these hopeful highlights for a taste of what's to come!



The total number of nights of shelter at HSHM provided to members of our community.

The number of people who spent time as residents of HSHM throughout 2025.



The number of households assisted by our Rapid Rehousing program in 2025.



2025 HOPEFUL HIGHLIGHTS



The number of HSHM residents in 2025 that have served in the armed forces.

The material weight (lbs) we were able to recycle this year with the community's help!



The number of families impacted by our "Give Thanks" initiative this Thanksgiving.



FOOD SERVICES

No matter how you choose to give—your time, resources, or a meal—we are truly grateful for this community's unwavering support.

Your generosity keeps our mission well-fed and brings hope to those who need it most. Thank you for being the secret ingredient in making a difference!



32,810 MEALS SERVED
11,036 SACK LUNCHES SHARED
THROUGHOUT 2025



**BREAD
FOR LIFE
FOOD CO-OP**



117 ACTIVE CO-OP MEMBERS
1,871 CARTS FILLED
1,844 SHOPPERS

The Bread for Life Co-op continues to reflect what's possible when people come together with purpose. What began as a simple idea has grown into a community built on shared effort, respect, and opportunity—where members, volunteers, and staff each play a meaningful role. Your support has helped sustain and strengthen this work, creating space for people to both give and receive.

VOLUNTEER @ HSHM

Our volunteers are at the heart of everything we do at Home Sweet Home Ministries. This past year was filled with moments of compassion, consistency, and quiet impact that made a real difference in the lives of our guests. From everyday interactions to behind-the-scenes support, our volunteers helped create a place of welcome, dignity, and hope. We are so grateful for each person who chose to give their time and energy to be part of this work.



We're incredibly thankful for the 579 volunteers who served alongside us in 2025, including 188 new faces who stepped into our mission for the first time. Together, they completed 329 volunteer trainings, equipping themselves to better serve our community with care and excellence. Each number represents time given, relationships built, and lives touched—and we don't take any of it for granted.



WELCOME TO THE JUNCTION AT HSHM



With about **70** average daily visitors, **The Junction** had another strong year in 2025, continuing to serve as a consistent place of support, connection, and community care. This year included events and programs such as Super Bowl outreach, the PIT Count, a United Way board meeting, HOPE: A Life Changing Conversation, NA: Back to Life, Financial Peace University, free hearing screenings with ISU Audiology, and a Writing Group. We are grateful for continued partnerships with organizations like Chestnut (Mobile Health Unit), Heartland Community College, McLean Co. Health Department, U of I Extension Office, and The Grapevine Group, which helps expand the services available.

Thank you for making this work possible.





NIGHT IN A CAR

We are thrilled to share that NIAC 2025 raised \$150,454!

Thank you to all participants, sponsors, donors, and volunteers who made this event a success. We are especially grateful to Young America Realty and all of our sponsors for their generous support.



DRIVING OUT HOMELESSNESS WITH NIAC 2025



On February 6th, approximately **165 participants** spent the night in their vehicles to help raise awareness for individuals experiencing homelessness. Throughout the evening, participants engaged with learning opportunities that highlighted the mission and impact of Home Sweet Home Ministries.

Your generosity continues to make a meaningful difference, helping provide stability and hope to those we serve. Thank you! Save the date! We're rev'ing up for our 11th annual Night In A Car on **February 5th, 2027!**

STREET OUTREACH & THE BRIDGE

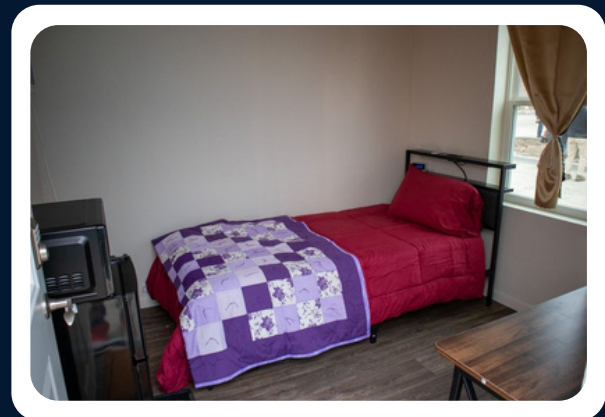
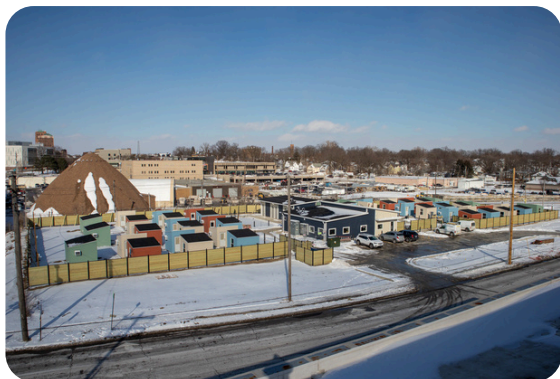


HSHM



Street Outreach continued to be a vital connection point for our neighbors living unsheltered across Bloomington-Normal. Throughout the year, our team engaged with individuals across four primary encampment locations, as well as many others who came to The Junction seeking support and guidance. Each interaction was an opportunity to build trust, offer care, and remind people they are not forgotten.

One of the most meaningful moments this year came with the opening of **The Bridge**, our new non-congregate shelter. Through consistent, relationship-driven outreach, approximately **35 individuals** were able to transition directly from encampments into safe, stable shelter within the first few days. Encampments at places like the Gravel Pits and Sugar Creek were largely and positively resolved as individuals chose to come inside. It was a **powerful example** of what can happen when **trust, timing, and the right resources come together for the community**.



YOU BUILT THE BRIDGE

Because of the **generosity** and **vision** of our Build the Bridge campaign donors, our non-congregate shelter village became a reality. Your support helped create a place of **safety, dignity, and stability** for neighbors experiencing homelessness, offering not just shelter, but a pathway toward **hope** and **renewal**. We are deeply grateful for your partnership in helping build a stronger, more compassionate community.

Thank you to all our incredible donors
for making The Bridge a reality!

Eastview Church
Wayne Gerst
Pontius Family Charitable Fund
Loretta Hess
Anita Carney
Jerry & Carole Ringer
Fred & Carolyn Hoyt
Dean & Pat Messinger
Mark & Ellen Wylie
Dudley & Judy Burgess
Compass Church
The David Kieser Family
Trinity Lutheran Church
First Presbyterian Church of Normal
Joe & Ruth Haney
Rick Althaus & Brenda Johnson
Tom Hileman Generosity Fund
In Memory of Joan & Elmo Gentes
In Memory of Delmar Small
Anonymous Friends & Supporters



2025

FINANCIAL HIGHLIGHTS

FUNDING

**INDIVIDUAL DONATIONS:
\$486,612**

**GRANTS:
\$1,110,784**

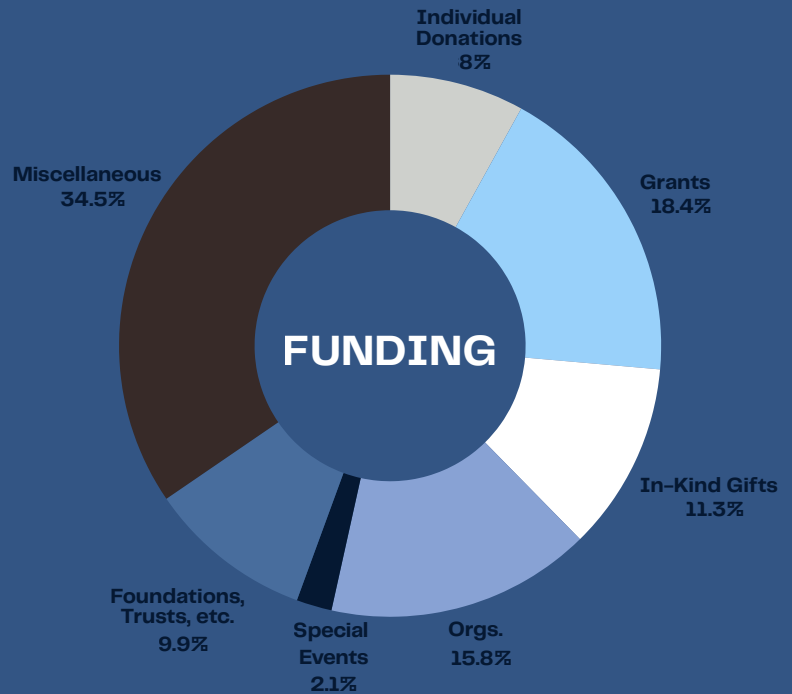
**IN-KIND GIFTS:
\$681,143**

**ORGANIZATIONS:
\$957,779**

**SPECIAL EVENTS:
\$128,018**

**FOUNDATIONS,
TRUSTS, ETC.
\$596,984**

**MISCELLANEOUS
FUNDRAISING:
\$2,090,964**

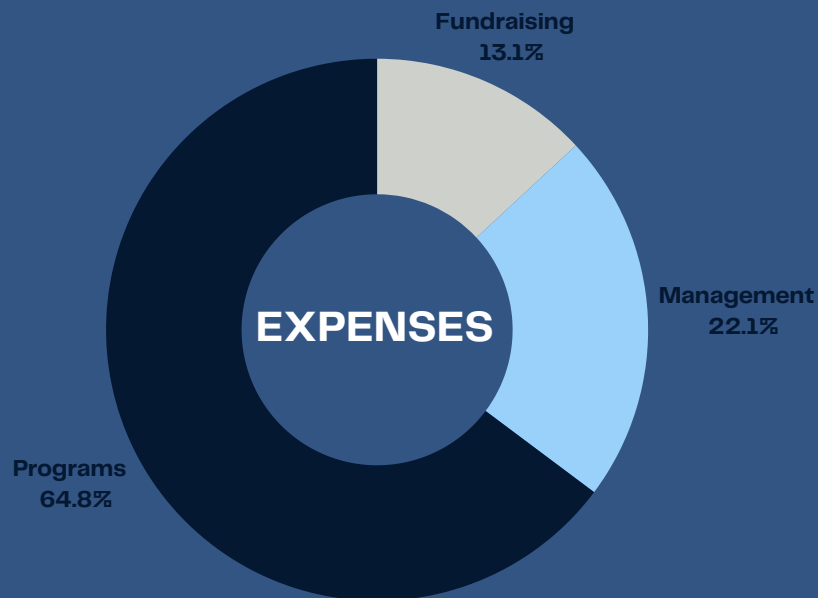


EXPENSES

**FUNDRAISING:
\$535,374**

**MANAGEMENT:
\$904,040**

**PROGRAMS:
\$2,646,850**





As we reflect on 2025, we're reminded just how much this work depends on a community that shows up with generosity and care. Bloomington-Normal has continued to be that kind of community, and we are deeply thankful.

Every meal served, every bed provided, and every life touched this year was made possible through your giving, your time, and your prayers. Your support isn't just helpful—it's what makes this ministry possible day in and day out.

Because of you, we've been able to take meaningful steps forward in our mission to demonstrate Christ's love through innovative approaches that instill hope, restore lives, and build community. That impact goes far beyond what can be measured, and it continues to shape the lives of those we serve.

Thank you for standing with us, believing in this work, and being part of what God is doing through Home Sweet Home Ministries.


HOME SWEET HOME MINISTRIES

Home Sweet Home Ministries
303 E. Oakland Avenue, 61701
(309) 828-7356
hshministries.org